



SimNet

REGIONAL SIMULATION AND HUMAN FACTORS PROJECT

NEWSLETTER
ISSUE 004 | JUN 2022

Conference; HEE XR Hubs; Winter SimNet



Simulation for Impact we are delighted to report as an overwhelming success.

We began with an aspirational target of 100 attendees, one or two keynotes and hoped for some exhibitors, with opportunities for attendees to meet, attend, present, and deliver workshops.

The University of Surrey hosted an event that saw ~140 Attendees enjoy 3 Keynote Speakers, a full hall of 8 Exhibitors and participate in multiple workshops and short presentations with 27 Presentation Teams or Individuals.

From before 9 until 5 pm the Kate Granger Building buzzed with discussion and excitement and the primary complaint seems to be that everyone could not do everything.

You can watch the Conference Overview on YouTube from our SimNet Website [here](#).

The Conference is awarded 5 CPD Points (the daily maximum) by the Royal College of Anaesthetists, we ask for evaluations at the brief survey [here](#) and we will provide a Certificate of Attendance.

more feedback overleaf

PLEASE Offer your feedback, we value this so much, help us make 2023 “Valued Simulation” even better!

Of the evaluation responses to date:

70% Strongly Agreed that they would recommend the conference, the rest Agreed.



70% Strongly Agreed that there should be an Annual Conference, the rest Agreed



70% Strongly Agreed the Conference was Collaborative, the rest Agreed



60% Strongly Agreed learning about value of Simulation for Inter-professional Education, the rest Agreed.



All comments – especially the negatives – will inform planning for 2023.
Free Text comments included:

Amazing

It was a well organised and enjoyable conference, good venue, timekeeping, and catering. Amazing value for 5 hrs of relevant cpd.

We really felt part of a community contributed too by so obviously internationally important people.

Amazing venue, food, and great selection of companies for the exhibitions. That was much appreciated. It was overall a great experience.

Thoroughly enjoyed the day and learned a great deal. Look forward to next year!

Very enjoyable and interesting event would have liked to have attended some of the workshops that ran alongside ones I attended so could have been split up into two days, but overall was brilliant!

Great inaugural conference. It would be helpful to be able to access the other sessions (maybe view online or after conference or something?)

Regarding the last comments, we intend to provide a lasting resource and recognition of the conference by collecting 20 x 20 PechaKucha Presentations from all the presenters (posters included) The Keynote Slides are available on our website.

The PechaKucha 20x20 presentation format is a slide show of 20 images, each auto-advancing after 20 seconds. It's non-stop and you've got 400 seconds to tell your story, with visuals guiding the way.

Contact us at ksssim@canterbury.ac.uk with any further feedback or queries re Conference 2022 or 2023, we will be contacting all presenters about PechaKucha and if anyone would like to produce a 20 x 20 of your (team's) experience of the Conference let us know. This will form a permanent, celebratory, resource.



MEET THE TEAM

We would like to introduce you to our excellent team!



Prof Ali Bokhari is the associate dean at Health Education Kent Surrey and Sussex. He is the county Dean for Kent and leads the Simulation and Human factors project for KSS and is part of the Simulation initiative across the South East HEE region. He is a Paediatrician by background and Director of Clinical Education at Dartford and Gravesham NHS Trust.



Dr Sue Plummer is Director for the Institute of Medical Sciences and is the Campus Director for the Medway campus.



Andy Buttery is the Regional Simulation and Human Factors Project Lead, working to build a collaborative community of practice with specific objectives in Simulation for Mental Health (S4MH), Faculty Development in Simulation and Human Factors, and Simulated Patients/People (SNIPS).



Sarah Keeling-Smith started at the university as a Senior PA to the Pro Vice Chancellor in 2010 and then became a Project Administrator in 2013 for various EU Interreg Projects such as CASCADE and DWELL. She began working on the Regional Simulation and Human Factors Project in May 2021.



Isobel Clarke joined Canterbury Christ Church University in April 2021 as Clinical Fellow in Simulation for Mental Health responsible for design, delivery, and evaluation of the Sim4MentalHealth programme.



Lauren Philpott, also a Clinical Fellow with Isobel, is a registered children's nurse and clinical simulation facilitator with a keen interest in Mental Health

ENGAGE WITH US



NEWS HIGHLIGHTS

HEE TEL Readiness Assessment

What is the TEL Readiness Assessment?

This forms both a resource and an assessment of preparedness for the highest tech simulation equipment, which will be required when applying for equipment for example from the HEE TEL XR Hub. Benchmark how you are positioned against 8 domains to judge overall TEL Maturity. Identify positions of strength along with areas that need development. In addition to being a benchmark for you, this enables HEE to work across our region, showcasing and spreading best practice and provide targeted support where needed.

How do I get started?

* [Try to complete it online](#)

* [Book a Session with your Relationship Manager](#)

Iain O'Neill Covers HEE(SE) & HEE(Lon) iain.oneill@hee.nhs.uk



HEE XR Hub Pilot Phases 2 & 3

Attached to this message are zipped folders containing everything you need for the Hub Pilot and TEL Readiness. Thanks for Iain O'Neill, our Regional Relationship Manager.

Winter SimNet

We now have a date but still seek a virtual – ideally Sussex – host, this is not an onerous undertaking and you get to showcase your work.

What is the XR Hub Pilot?

- Opportunity to try Headsets before you buy them and for us to test the logistics of sending them out supporting their deployment and getting them back.
- Phase 1 was a set of [HoloLens 2](#) (Mixed Reality)
- Phase 2 is a set of [HTC Vive Focus 3](#) (Wireless Virtual Reality)
- Phase 3 will be a set of [RiVR Pico G2 4K](#) (Wireless all in one classroom kits with a laptop)

Mixed Reality (MR)



Microsoft HoloLens 2
20 packs of 5 devices
Nationally

Pilot in progress

Virtual Reality (VR)



HTC VIVE Focus 3
20 packs of 5 headsets
Nationally

ETA Imminently

Virtual Reality (VR)



Pico G2 4K RiVR Kit
7 packs of 20 headsets
(classroom pack) Nationally

ETA Late March

Content Creation



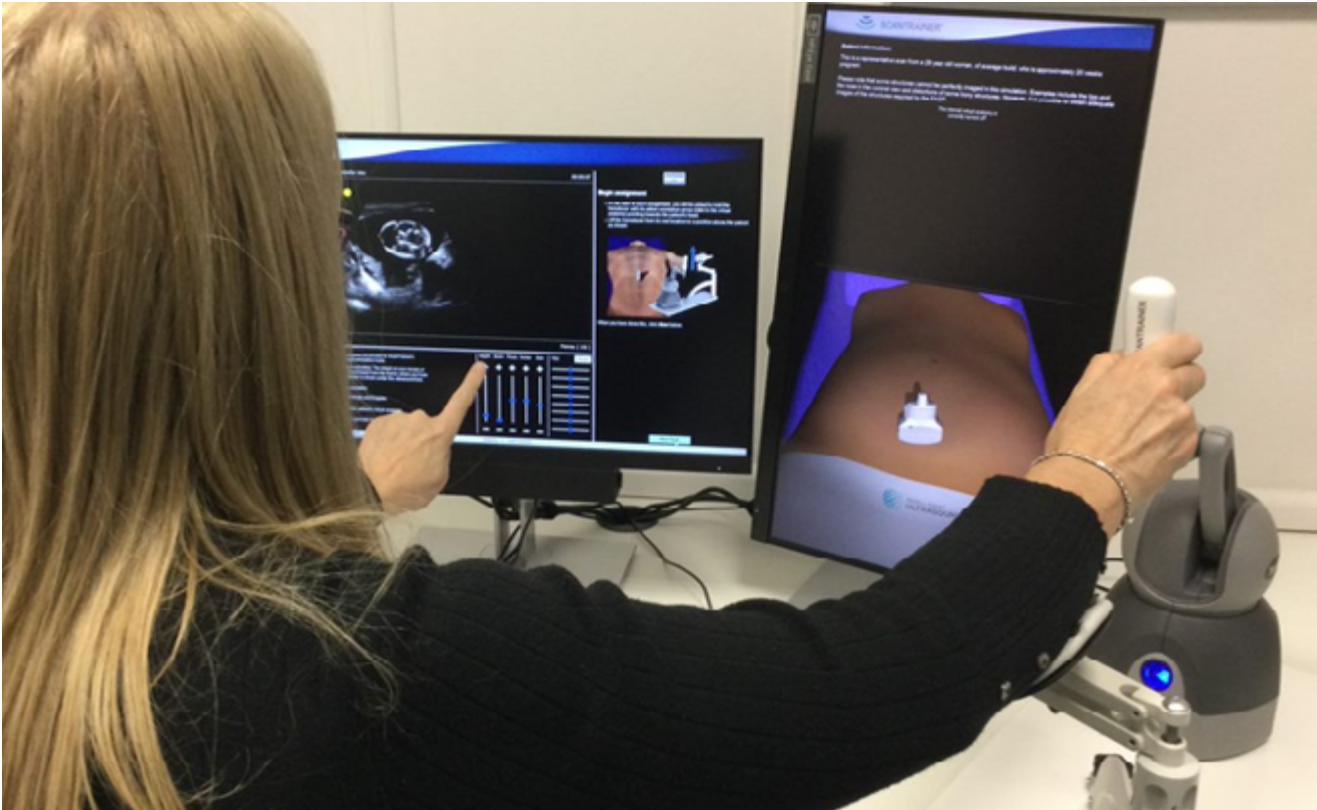
Create 360° videos, etc
20 packs plus 3 advanced packs
Nationally

TBC

[@NHS_HealthEdEng](#)

Ultra-Sound Simulation, Provision and Updating

We have completed the support of US Simulators in Medway, Margate and Chichester. This a demonstration of our intention to align all our work with that of Trusts, Academies and HEI's, etc.



iRIS Scenario Authoring Platform

<http://irissimulationauthoring.com/>

Our Informative SimNet Webinar:

<https://blogs.canterbury.ac.uk/simnet/2022/01/12/iris-health-solutions-webinar/>

This is your last call to apply for SimNet iRIS Licences.

Licences are perpetual, transferable, and hosting is funded to March 2024. After, hosting is ~£50 pa. per licence. Remaining Licences will be distributed on a first-come first-served basis.

Contact ksssim@canterbury.ac.uk

Dates for the diary

CIEHF Regional Meeting – contact Andy Buttery – Wednesday 6 July 12.00 – 14.00
HEE TEL VR360 Monthly meeting Monday 18 July 9.00 – 10.00

S4MH Day Wednesday 7 September <https://blogs.canterbury.ac.uk/simnet/sim4-mental-health/>

S4MH Day Wednesday 5 October <https://blogs.canterbury.ac.uk/simnet/sim4-mental-health/>

Annual Medical Humanities Conference (first F2F since Pandemic) Thursday 13 October
SimNet Winter Online Meeting Tuesday 4 October 14.00 – 16.30 [Teams Link](#)

ASPiH Conference Birmingham Sunday (Masterclasses, F2F & Virtual) 6 November –
Tuesday 8 November <http://www.aspihconference.co.uk/>

