

HEE KSS SimNet Conference

23 May 2022



Impact: Creating the conditions for success

HEE KSS SimNet Conference

23 May 2022

Professor Bryn Baxendale

HEE TEL Lead for Simulation and
Immersive Learning Technologies


On behalf of the HEE TEL team

bryn.baxendale@hee.nhs.uk

SimImmTech@hee.nhs.uk


Strategic vision for simulation and immersive learning technologies in health and care

- Improving patient safety
- Delivering a modern workforce
- Enhancing the quality and capacity of the learning environment
- Involving patients and the public
- Developing the simulation and immersive technology community
- Research and innovation
- Lessons from outside of health and care


November 2020  Health Education England

Enhancing education, clinical practice and staff wellbeing. A national vision for the role of simulation and immersive learning technologies in health and care

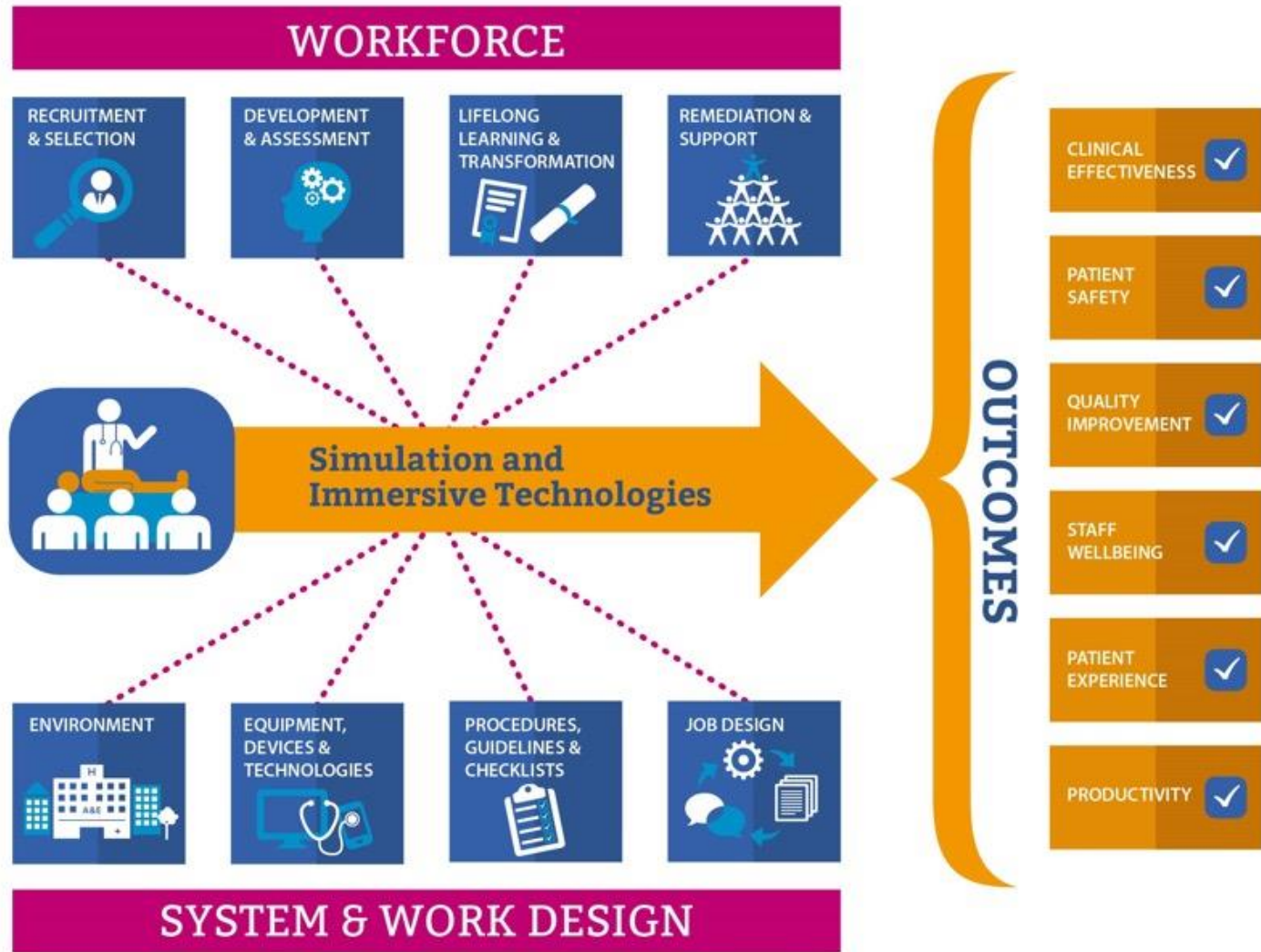
Technology Enhanced Learning (TEL)



Developing people for health and healthcare
www.hee.nhs.uk



November 2020



November 2020 Health Education England

Enhancing education, clinical practice and staff wellbeing. A national vision for the role of simulation and immersive learning technologies in health and care

Technology Enhanced Learning (TEL)

Developing people for health and healthcare

www.hee.nhs.uk

November 2020

Simulation and Immersive Technologies

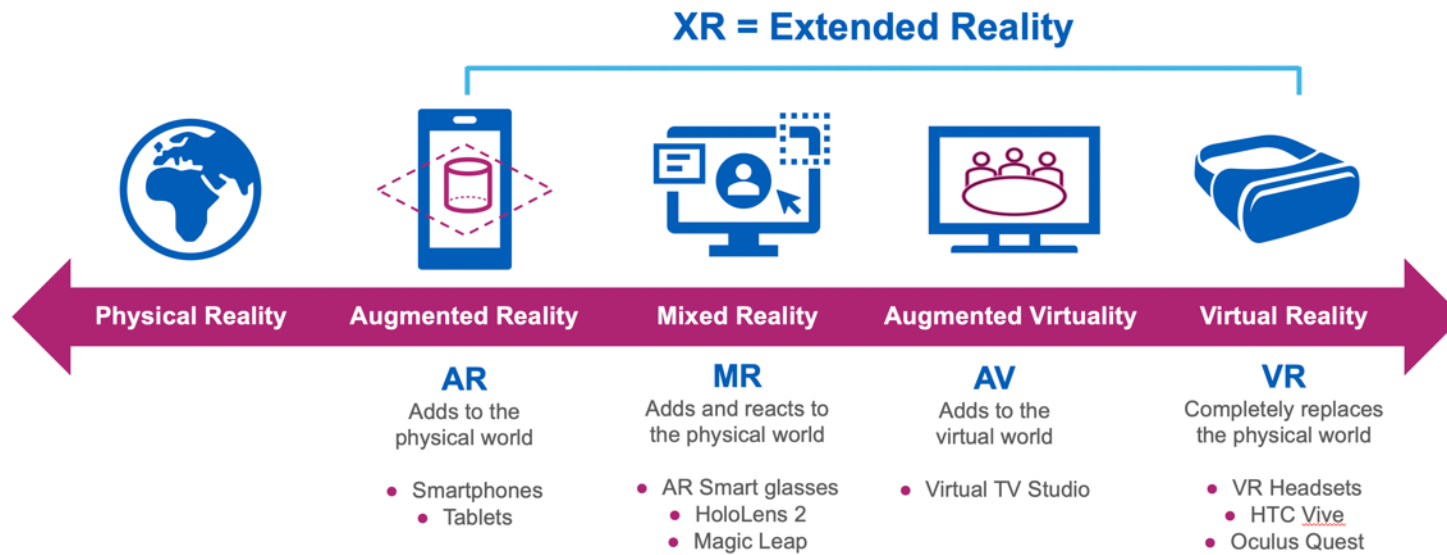
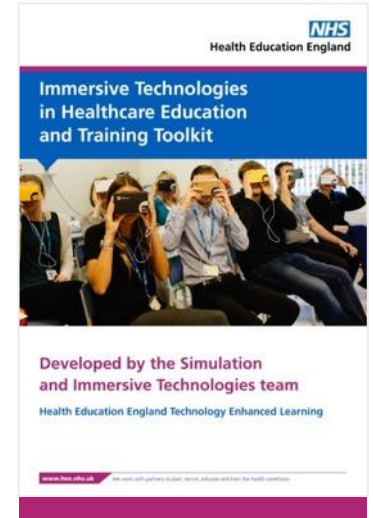
The workstream has a number of key projects and emerging themes of work to help build capability, capacity and strengthen evidence of effective use of simulation and immersive technologies at scale

- **Postgraduate medical and dental specialty training:**
Reset, Recover, Reform
- **Enhancing placement-based learning and the Blended Learning programme**
- **Supporting the implementation of the national patient safety syllabus and strategy**



Simulation and Immersive Technologies

Immersive technologies have the power to revolutionise health and care education and improve the quality, safety and effectiveness of care delivery. HEE TEL has contributed to [key strategic publications](#) and are helping to accelerate the evidence-based introduction of extended reality (XR) in health and care education, training and practice.



Measurable benefits

Clear pathway for integrating XR technologies in educational practice

Resources to support XR adoption and evaluation shared on the Learning Hub

Case studies describing content creation and application in different contexts

Extended Reality (XR) roadshows



FRACTURE REALITY



- Regional roadshows
- Mixed reality education users meetings
- Content creation groups / networks
- Immersive learning technology officers




360 degree video VR content creation toolkit



NHS
Health Education England

Immersive Technologies in Healthcare Education and Training Toolkit



Developed by the Simulation
and Immersive Technologies team

Health Education England Technology Enhanced Learning

www.hee.nhs.uk We work with partners to plan, recruit, educate and train the health workforce.

NHS
Learning Hub BETA


Home Help Create an account

A platform for sharing resources

Enabling the health and care workforce to contribute and share a wide variety of learning resources for colleagues to use.

Sign in Sign in with OpenAthens


[Create an account](#)



February 2021 **NHS**
Health Education England

National toolkit to support the use of simulation in health and care: How to develop a virtual reality 360-degree film - part one


By Nick Peres



Editing software in use to edit one of the HEE allied health professional 360 films

Developing people
for health and
healthcare

www.hee.nhs.uk

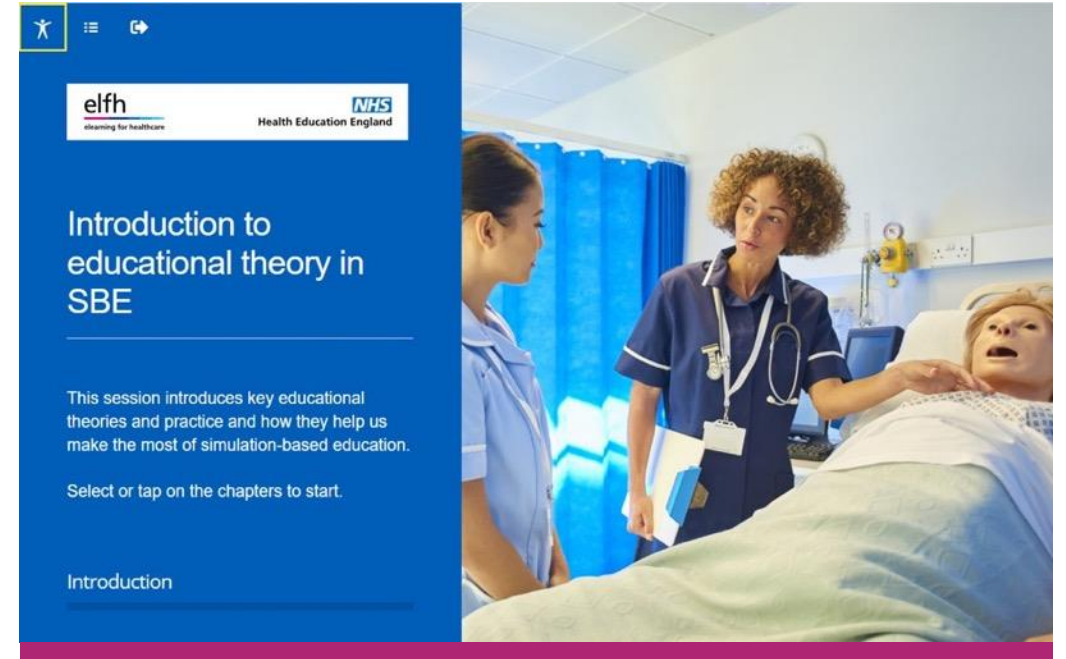


THE NHS
CONSTITUTION
the NHS belongs to us all

Simulation and Immersive Technologies

The workstream provides resources and coordinates programmes of work to help the national and local adoption of simulation and immersive technologies.

- **Designing a national faculty development programme for simulation educators and technicians:** this will provide a modular elearning and workshop programme co-designed with key stakeholders and available to all colleagues interested in understanding and applying simulation-based methods within their practice
- Applying **evaluation tools and techniques**, enhancing **standards for quality assurance** purposes, and engaging with **specific networks or communities of practice** to develop and share good practice



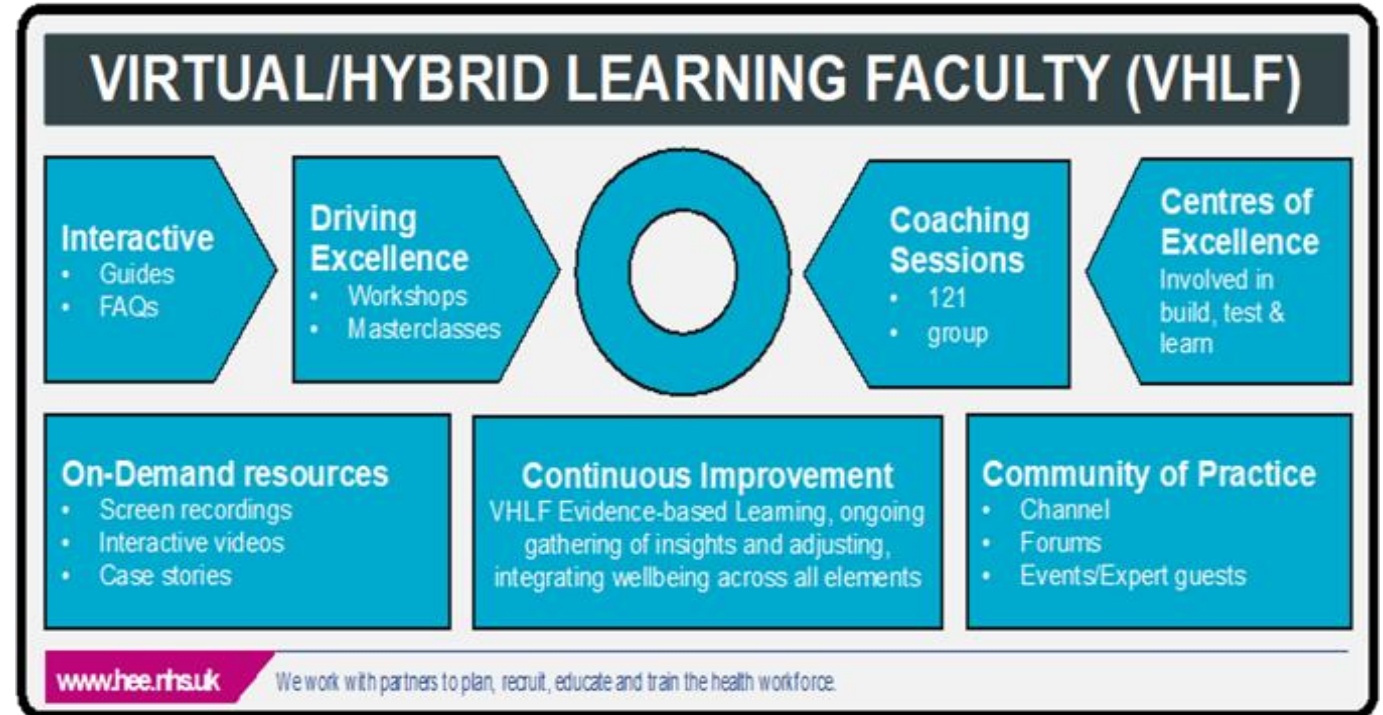
VHLF Community of Practice (COP)

A key component of the VHLF is the COP. It aims to drive excellence in the community for those who are passionate about sharing knowledge and connecting with other educators and colleagues who provide learning interventions.

This is a dedicated space for educators and those who work in the education community to connect with each other through various opportunities where you can share knowledge and best practices of virtual and hybrid learning, attend CPD events and hear about the latest developments within the faculty.

To sign up to the Community of Practice, please register your interest by completing this [form](#).

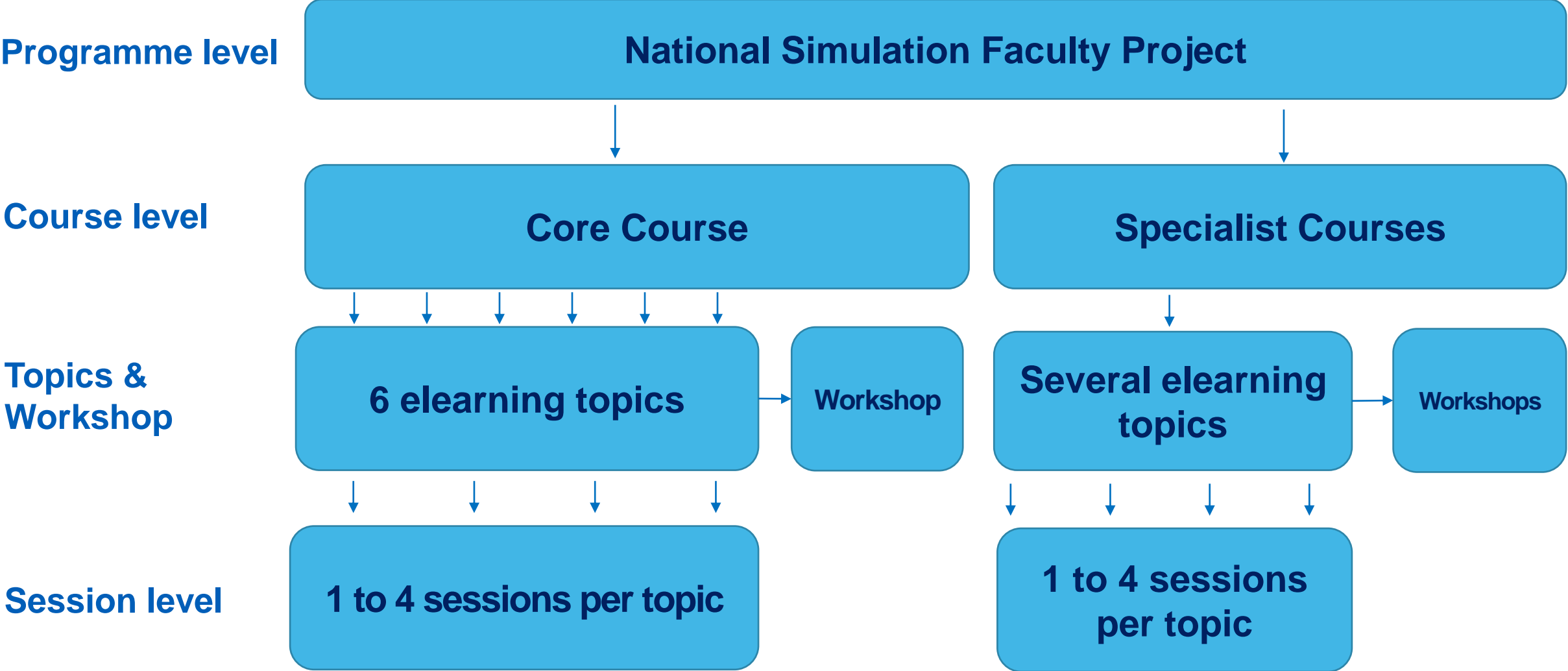
- [Upcoming CPD Events - Summer Series](#)
- [The next series of CPD masterclasses for the COP has now started.](#)
- [These events are open only to COP members. Please join the COP now to find out more. Sessions will run until July.](#)



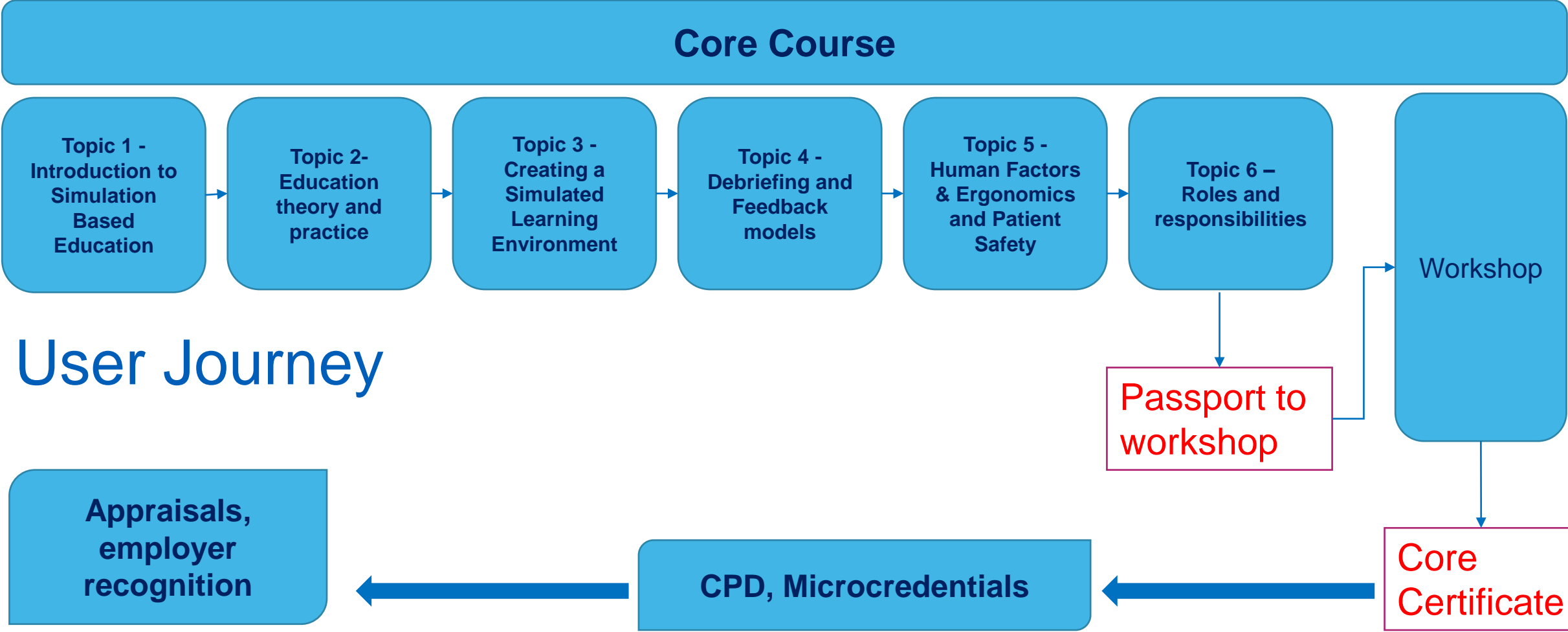
By joining the COP, you will automatically be added to a dedicated Microsoft Teams channel set up to support this growing community.

With over 1,200 colleagues signed up, this is a place to connect with fellow educators and those involved in the education community and to hear the latest news about the project, events and upcoming opportunities.

HEE Updates – National Faculty Development



HEE Updates – National Faculty Development



HEE Updates – National Faculty Development

PC version

elfh
learning for healthcare

NHS
Health Education England

Introduction to using learning theory in simulation-based education

This session introduces key educational theories and practice and how they help us make the most of simulation-based education.

Select or tap on the chapters to start.

- Introduction
- Behaviourism and simulation-based

Mobile version

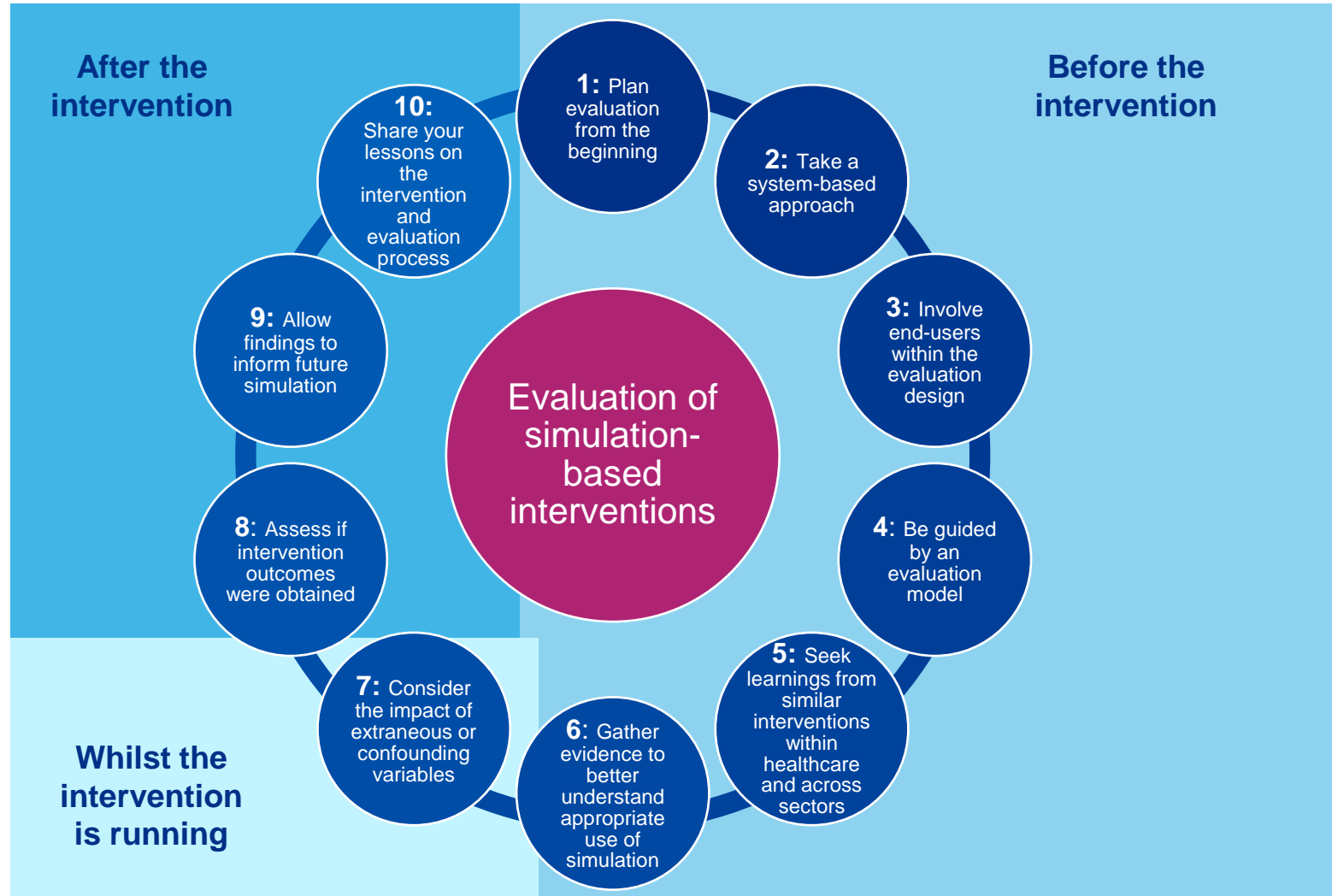
elfh
learning for healthcare

NHS
Health Education England

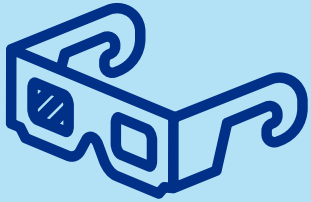
Introduction to using learning theory in simulation-based education

This session introduces key educational theories and practice and how they help us make the most of simulation-based education.

Principles of best practice



Next steps



Build a 'library' of key guidance resources and case studies / exemplars to enhance knowledge synthesis and best practice in evaluation of simulation interventions at scale

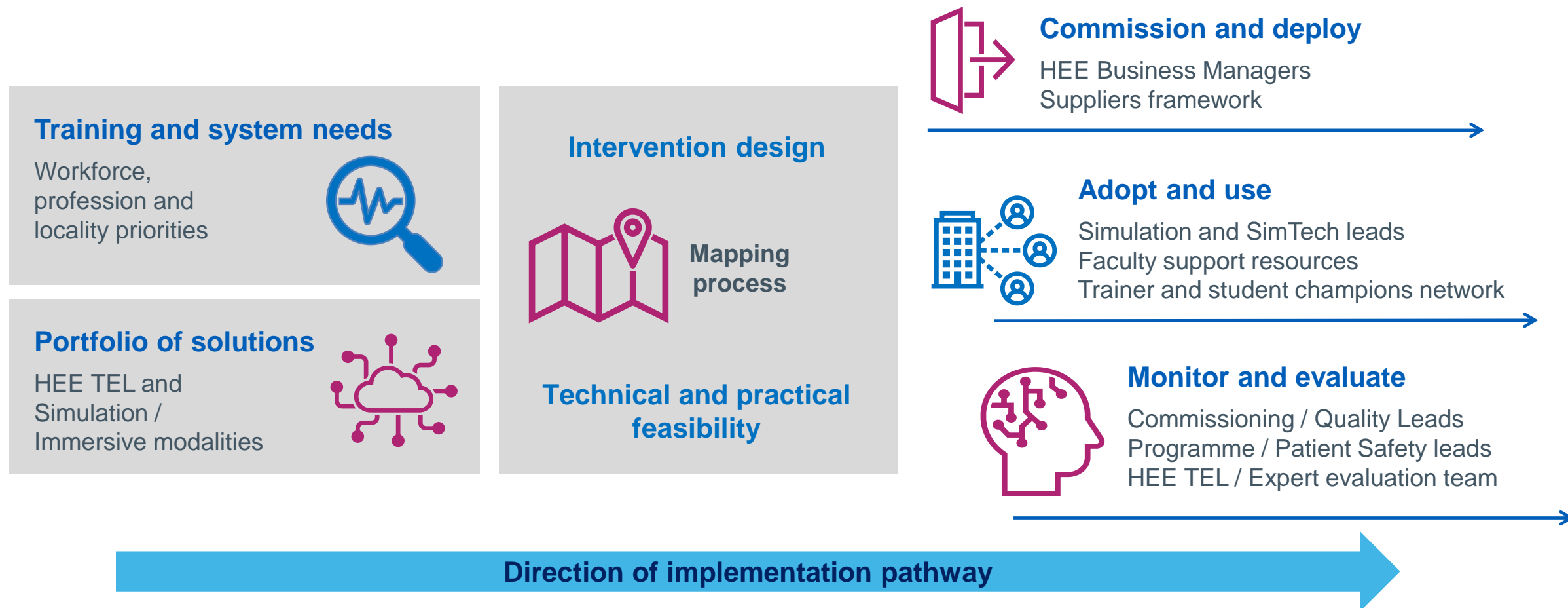


Refine and apply specific evaluation methods to demonstrate the benefit of simulation in **assisting postgraduate medical and dental specialty training recovery and reform**

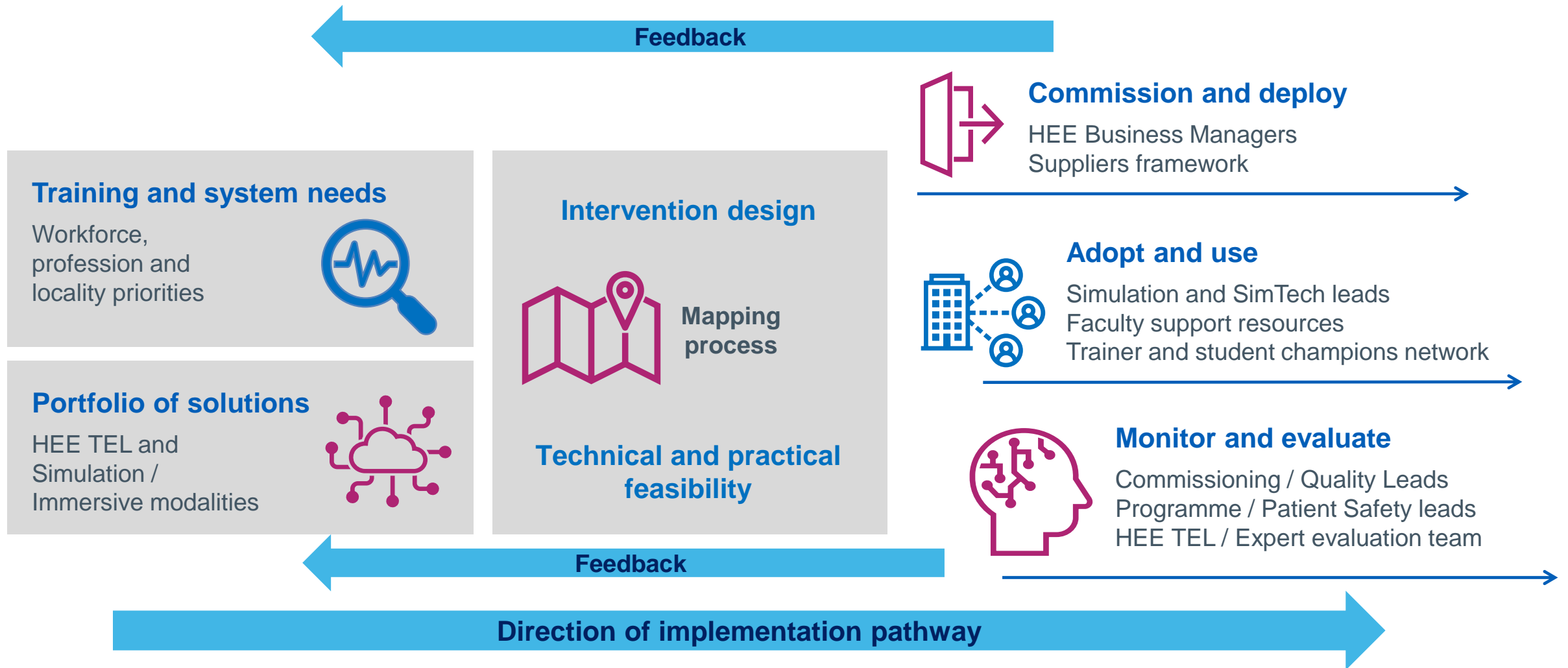


Embed and apply key evaluation principles and practices in the use of simulation to **enhance clinical placements for healthcare students**

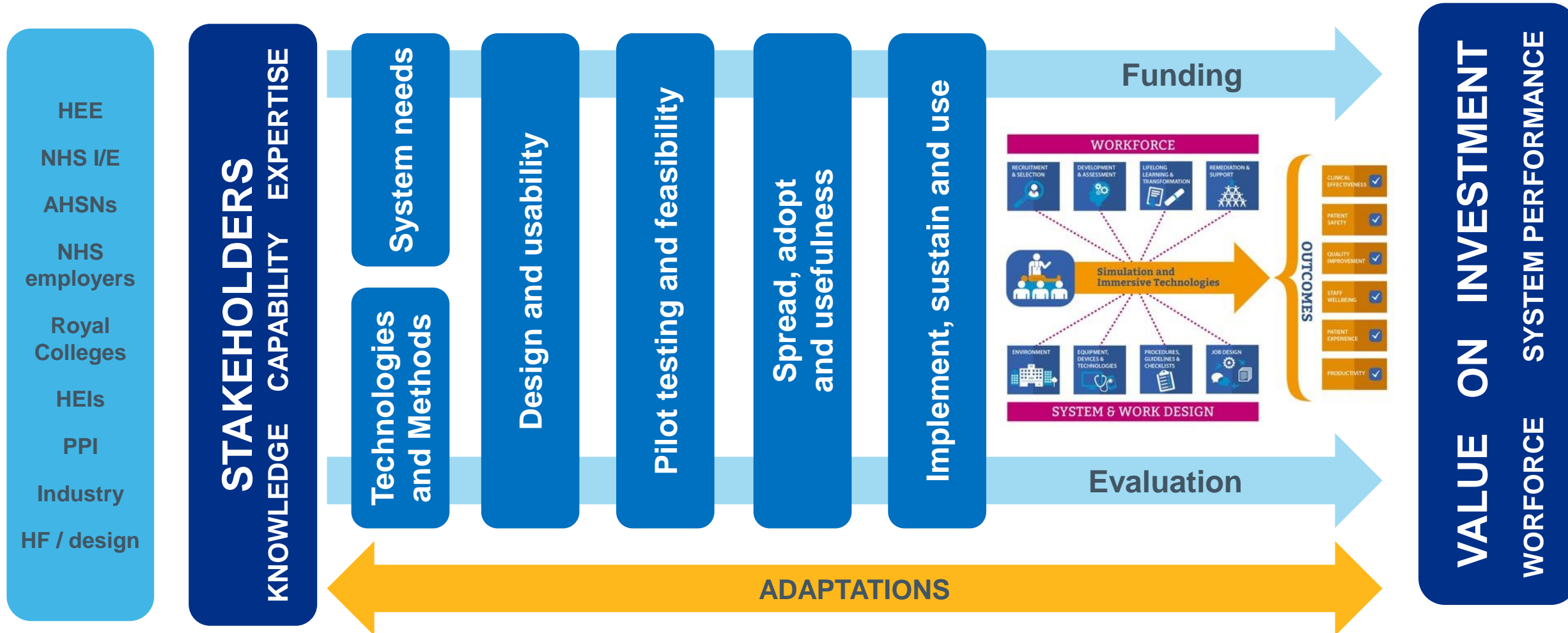
Implementation pathways



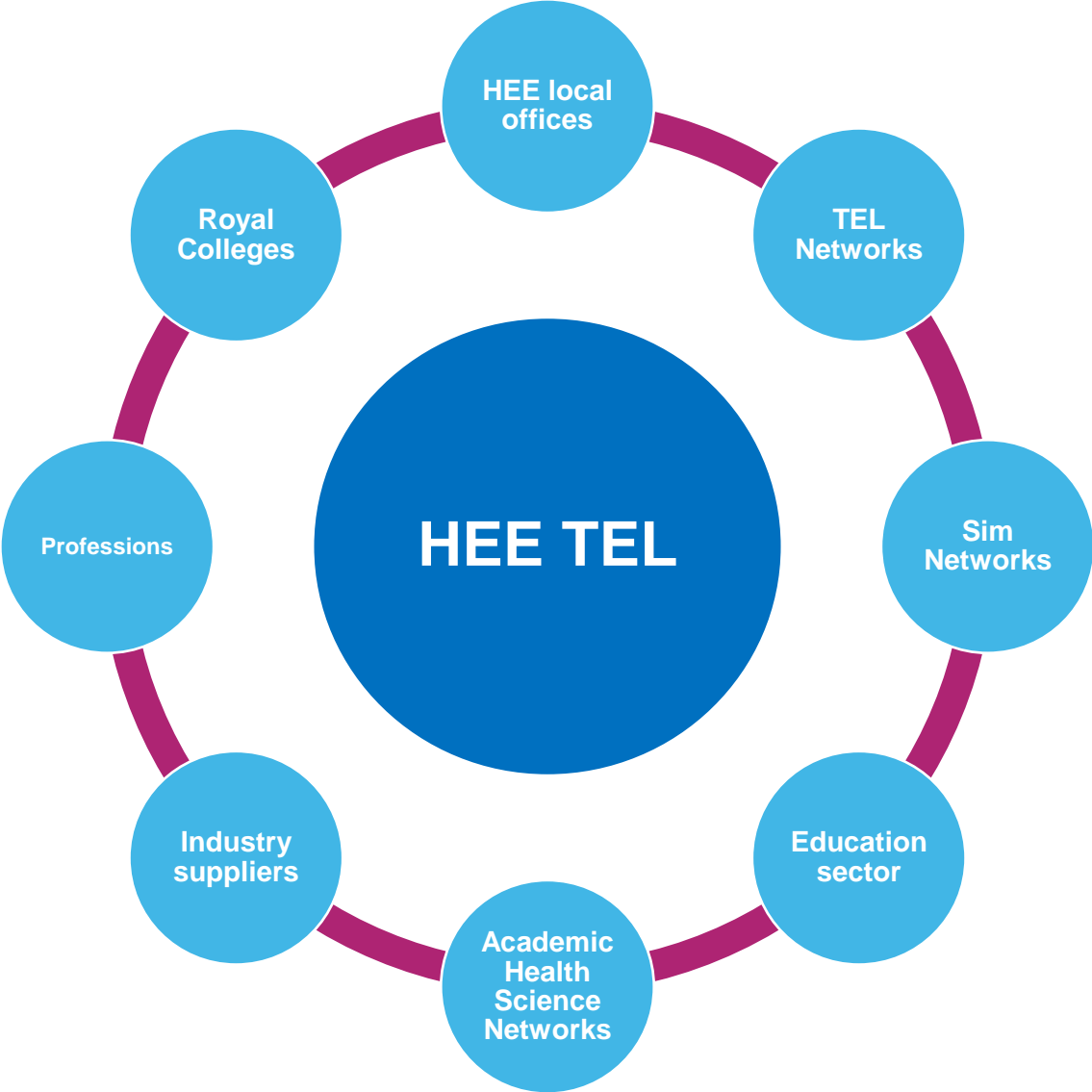
Continuous improvement model

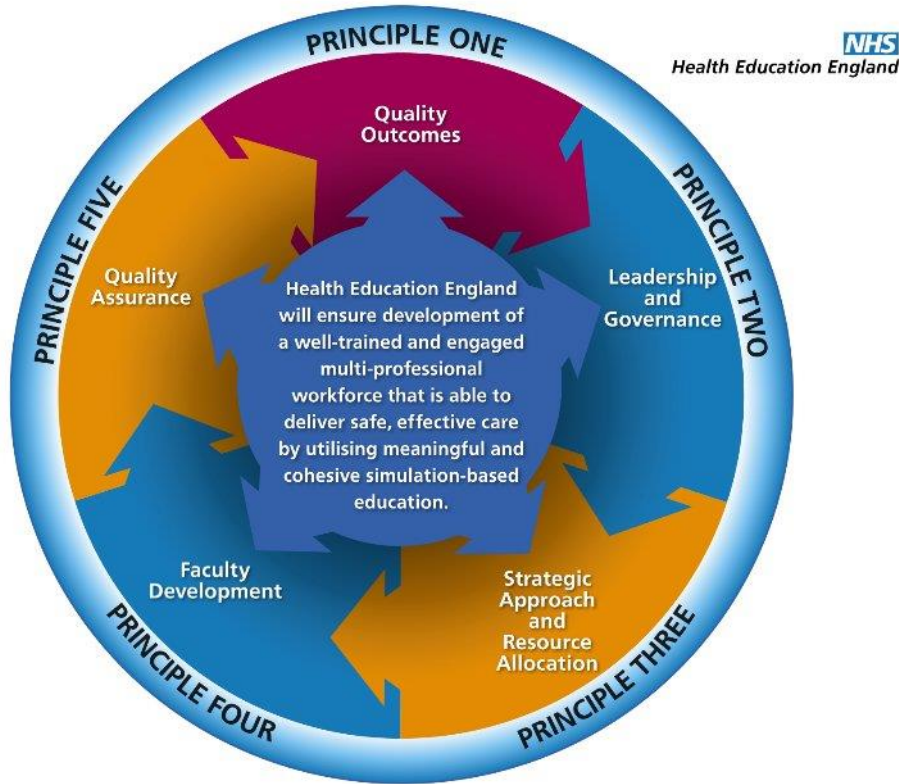


Building evidence and demonstrating impact



Supporting TEL





Simulation-based
Education in
Healthcare

Standards
Framework

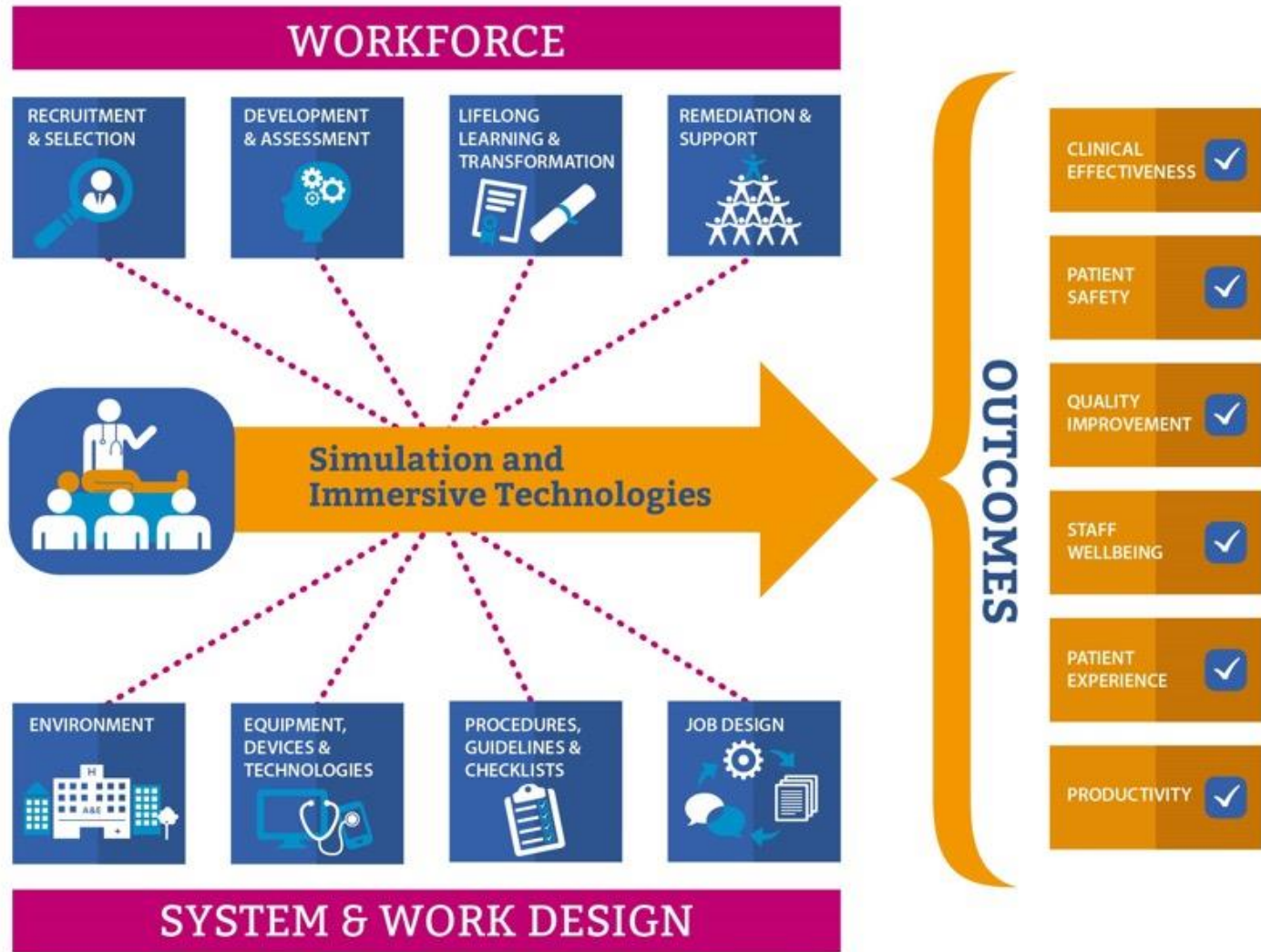
Where next?



- How do we support and build resilience within the health and care education and training system?

- Can we help design and improve the health and care system in which our learners will be working to support job satisfaction and well-being?





November 2020 Health Education England

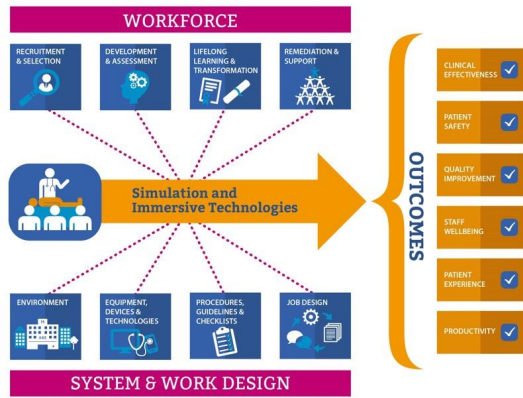
Enhancing education, clinical practice and staff wellbeing. A national vision for the role of simulation and immersive learning technologies in health and care

Technology Enhanced Learning (TEL)

Developing people for health and healthcare

www.hee.nhs.uk

November 2020



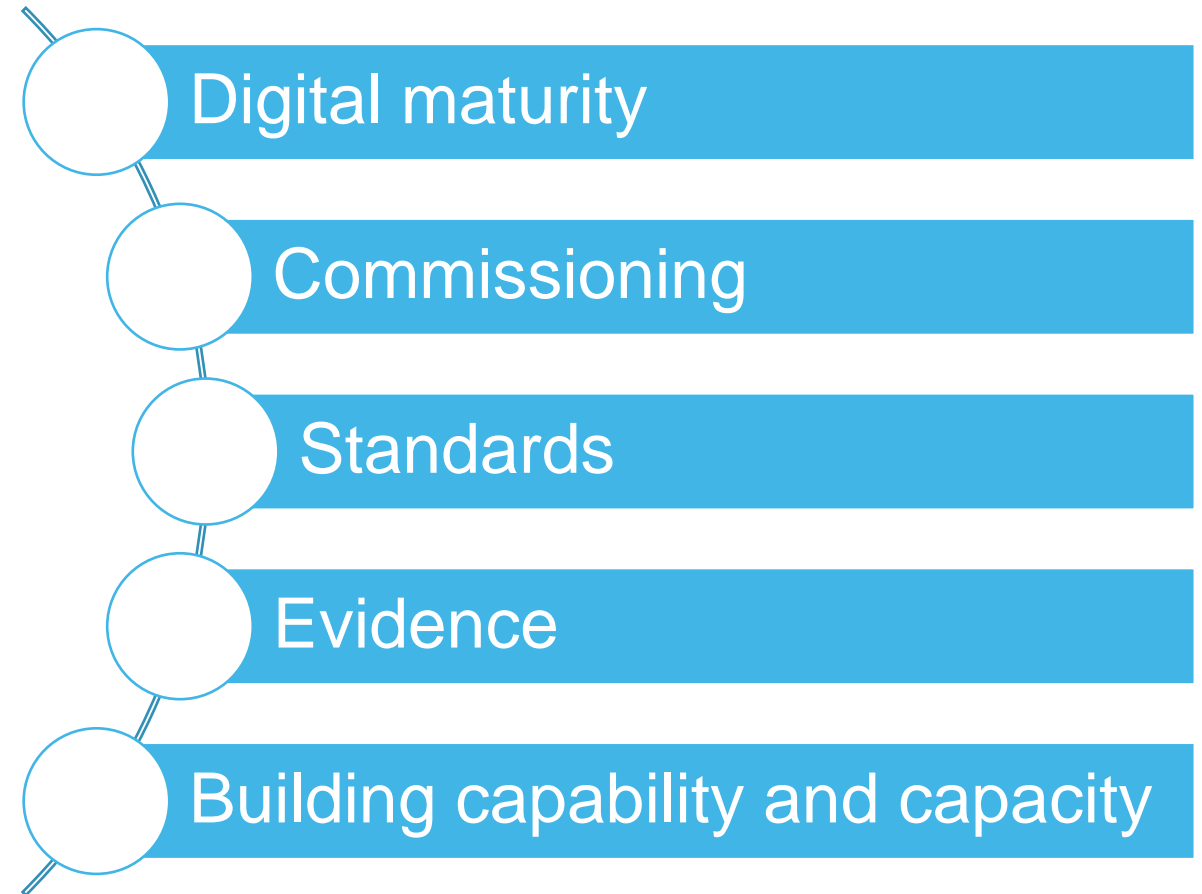
System level change programme

Evaluation culture to establish impact and value

Stronger academic function within HEE TEL and across networks

Critical stakeholder relationships across a complex ecosystem

Understanding what success will look like for you



Impact: Creating the conditions for success

HEE KSS SimNet Conference

23 May 2022

Professor Bryn Baxendale

HEE TEL Lead for Simulation and
Immersive Learning Technologies

On behalf of the HEE TEL team

bryn.baxendale@hee.nhs.uk

SimImmTech@hee.nhs.uk