

# REGIONAL SIMULATION AND HUMAN FACTORS PROJECT

**NEWSLETTER**  
**ISSUE 001 | DEC 2021**

## WELCOME

Hello there and welcome to our project newsletter highlighting simulation-based activities and events across the Kent, Surrey and Sussex region!

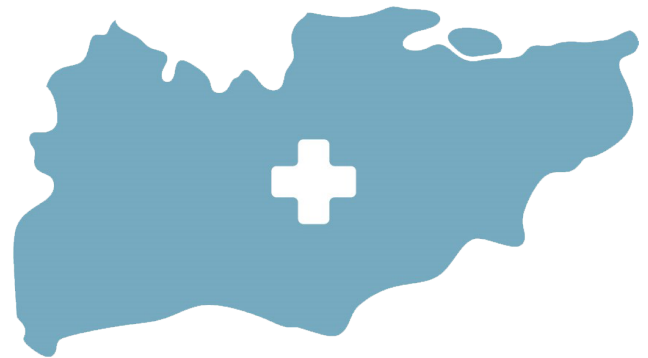
Our Mission: A Multi-Professional, Service-User Focused Network. Agile, collaborative and aspirational, to coordinate, develop, monitor & improve Healthcare Simulation & Human Factors Interventions in Education, Research and Improvement to the evaluated benefit of the community.

### MPF Info and links

The [Multi-Professional Fellowship Programme](#), supported by Health Education England working across Kent, Surrey and Sussex (HEE KSS) and managed by BSMS, takes a regional approach to multi-professional learning and will support M-P Fellows across a range of clinical backgrounds.

The aim is to work in system facing teams to bring about service improvement and establish collaborative networks in five key areas.

1. Advanced Practice
2. Differential Attainment
3. Digital Skills in Healthcare Practice
4. Technology Enhanced Learning
5. Leadership Development.



# SimNet



# MEET THE TEAM

We would like to introduce you to our excellent team!



Prof Ali Bokhari is the associate dean at Health Education Kent Surrey and Sussex. He is the county Dean for Kent and leads the Simulation and Human factors project for KSS and is part of the Simulation initiative across the South East HEE region. He is a Paediatrician by background and Director of Clinical Education at Dartford and Gravesham NHS Trust.



Dr Sue Plummer is Director for the Institute of Medical Sciences and is the Campus Director for the Medway campus.



Andy Buttery is the Regional Simulation and Human Factors Project Lead, working to build a collaborative community of practice with specific objectives in Simulation for Mental Health (S4MH), Faculty Development in Simulation and Human Factors, and Simulated Patients/People (SNIPS).



Sarah Keeling-Smith started at the university as a Senior PA to the Pro Vice Chancellor in 2010 and then became a Project Administrator in 2013 for various EU Interreg Projects such as CASCADE and DWELL. She began working on the Regional Simulation and Human Factors Project in May 2021.



Isobel Clarke joined Canterbury Christ Church University in April 2021 as Clinical Fellow in Simulation for Mental Health responsible for design, delivery, and evaluation of the Sim4MentalHealth programme.



Lauren Philpott, also a Clinical Fellow with Isobel, is a registered children's nurse and clinical simulation facilitator with a keen interest in Mental Health

## ENGAGE WITH US



# NEWS HIGHLIGHTS

## FACULTY DEVELOPMENT DAY

We delivered another Faculty Development Day (7th September) hosted by the CCCU Simulation Team at the Medway Maritime Campus, for primary care staff across Kent, Surrey and Sussex. The event was fully booked and was a resounding success.

## VACANCY - JOIN US!

Our Faculty Development Fellow, Phil Gurnett, has moved on to pastures new (we wish him every success) and we are currently advertising for a successor. Please contact [ksssim@canterbury.ac.uk](mailto:ksssim@canterbury.ac.uk) for more information.

## UPGRADE AT MEDWAY

Colour & Spectral Doppler in Obstetrics teaches the skills of using Spectral Doppler in Obstetrics, including vessel location, sample gate placement, identifying normal & abnormal waveforms & measuring spectral values. We are delighted to announce this upgrade at our Medway campus!

## HYBRID EVENTS

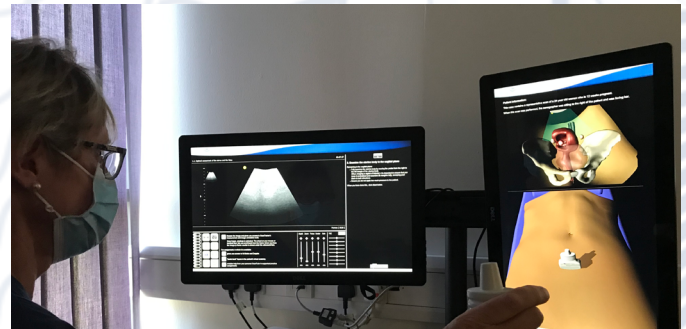
The team ran 3 positively received Simulation Mental Health Days in Folkestone, Canterbury and Medway. The events were hybrid on TEAMS and in person attended by professionals across counties and supported by simulated patients and experts. "Experts in Lived Experience". For more information please contact Isobel and Lauren on [lauren.philpott@canterbury.ac.uk](mailto:lauren.philpott@canterbury.ac.uk) or [isobel.clarke@canterbury.ac.uk](mailto:isobel.clarke@canterbury.ac.uk)  
Our sincere thanks to everyone who participated across a wide range of disciplines and specialties.

## iRIS

55 licenses have been distributed and Gary Taylor will be hosting a CCCU webinar on Tuesday 11 January 7pm



↑ Faculty Development Day



↑ Colour & Spectral Doppler



↑ Sim4MentalHealth Hybrid event

# DATES FOR YOUR DIARY

## 21<sup>st</sup> Feb 2022 – 14.00 – 16.30 SimNet:

Speakers include Iain O'Neill - TEL Relationship Manager. If you would like to "host" this virtual meeting, especially from Sussex, then get in touch!

## 23<sup>rd</sup> May 2022 – SimNet In-Person Conference:

The Simulation Suite at the University of Surrey – details to follow but if you would like to register your interest in attending this incredible industry lead event please contact [ksssim@canterbury.ac.uk](mailto:ksssim@canterbury.ac.uk)

## SimNet Early Evening Webinars:

### December, times TBC:

George Arealis, Cons. on his experiences with HoloLens to date (HEE STG Pilot). George has some impressive progress to report.

**January 11th at 7pm:** Gary Taylor, Business Development Manager on the iRIS Health Simulation Authoring Platform (for which we have a few licences remaining to distribute)

